

# *Chalet Baltus*



*Beaumier*  
**L'ALPAGA**  
Alt. 1100 M MEGÈVE ALPES







## CHALET BALTUS

Away from Megève, perched at an altitude of 1100 metres and facing Mont-Blanc, discover a unique haven of peace. A chalet nestling in the heart of nature, in a cosy little hamlet.

Combining an intimate atmosphere with hotel services, Chalet Baltus is the ideal place for an exceptional holiday.

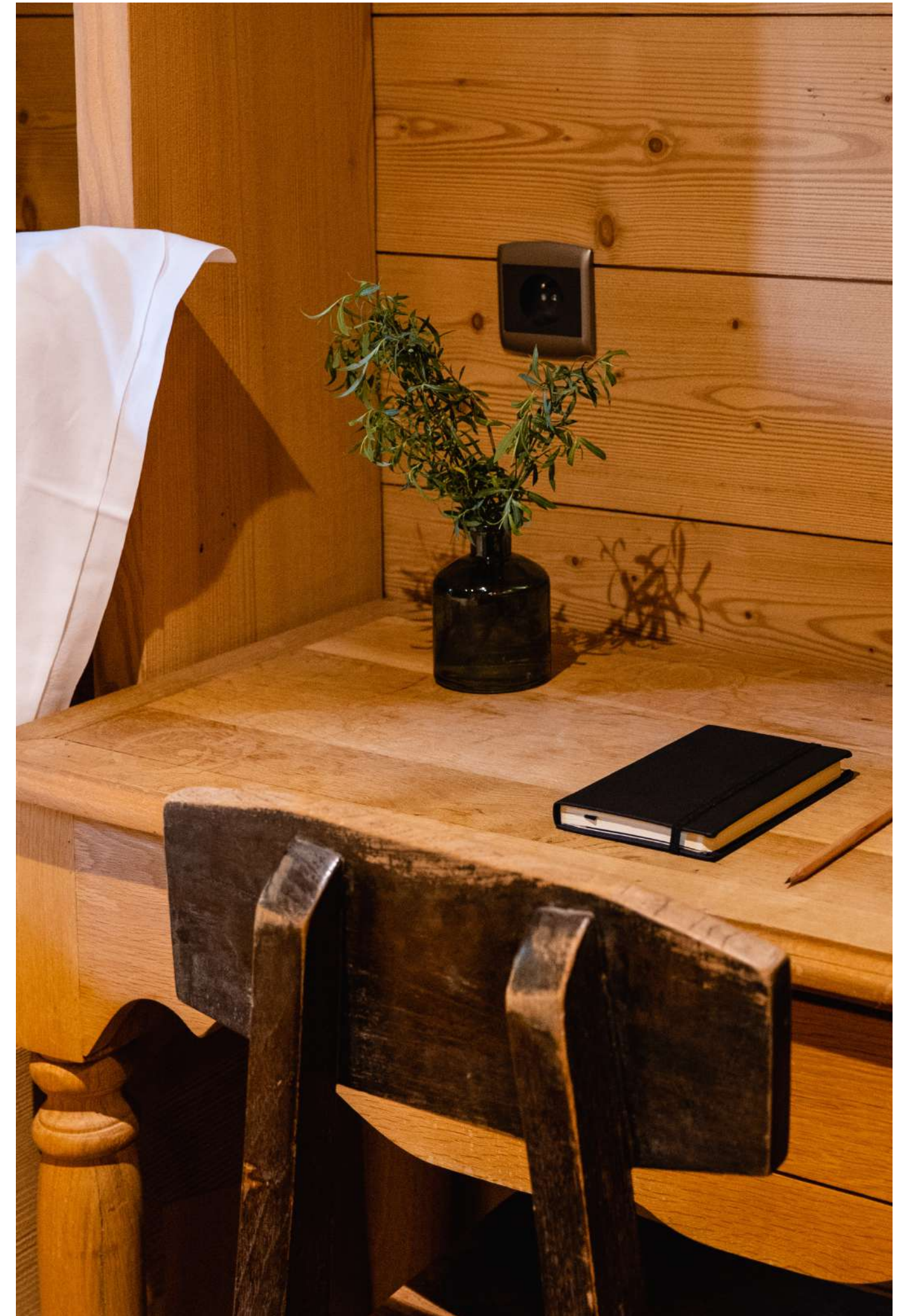
With a surface area of 255m<sup>2</sup>, this chalet has been designed in the purest Megevan tradition. It is designed to accommodate from 10 to 12 people on 3 floors, with its 5 bedrooms and 5 bathrooms. The large terraces and balconies are a natural invitation for guests to enjoy a moment of contemplation, facing the mountains.





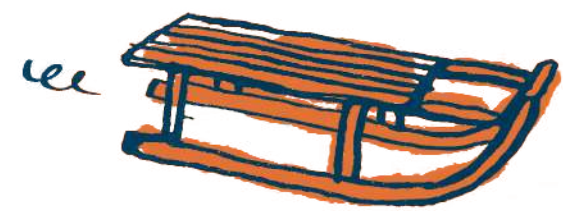


CHALET BALTUS



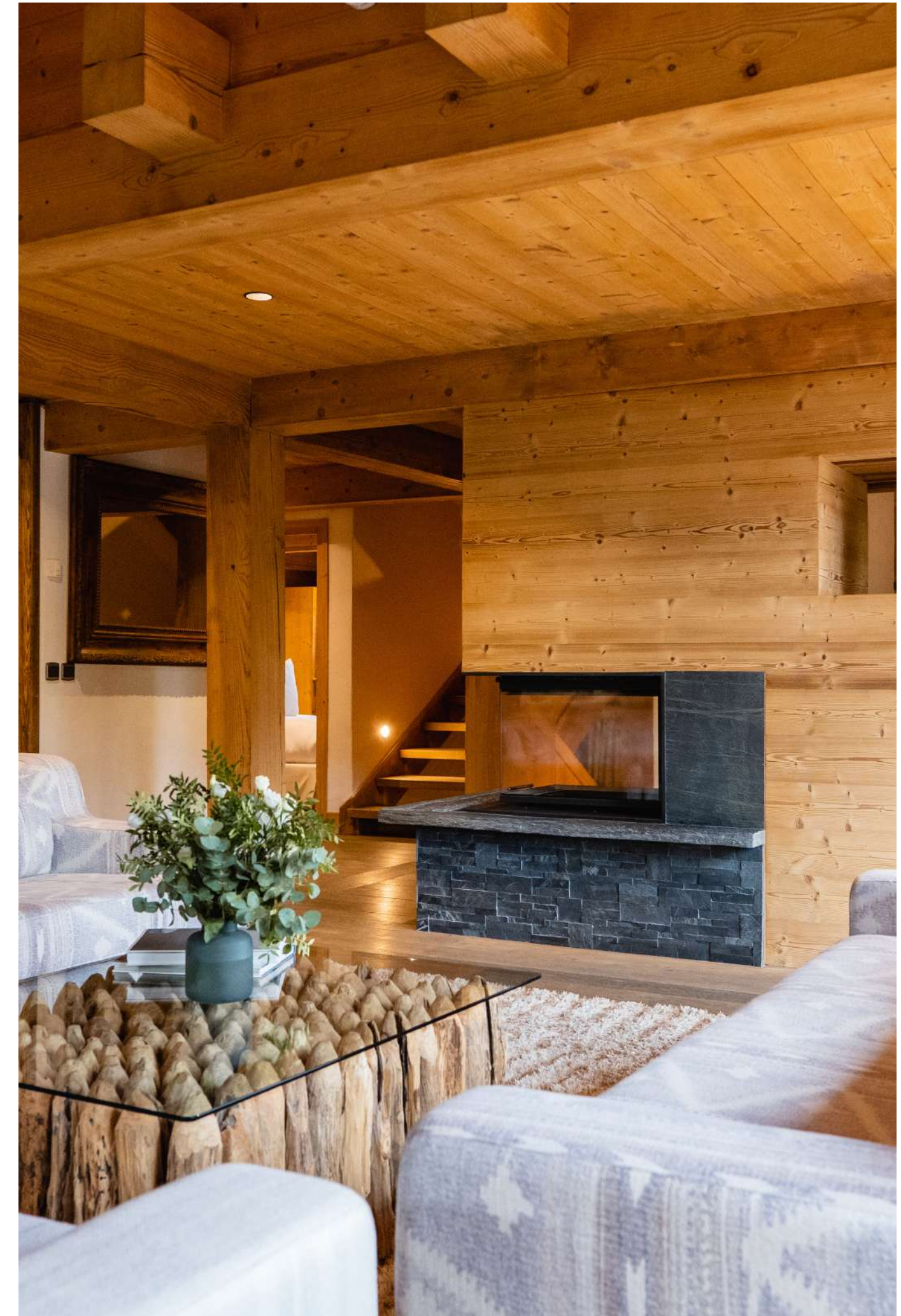


CHALET BALTUS





CHALET BALTUS









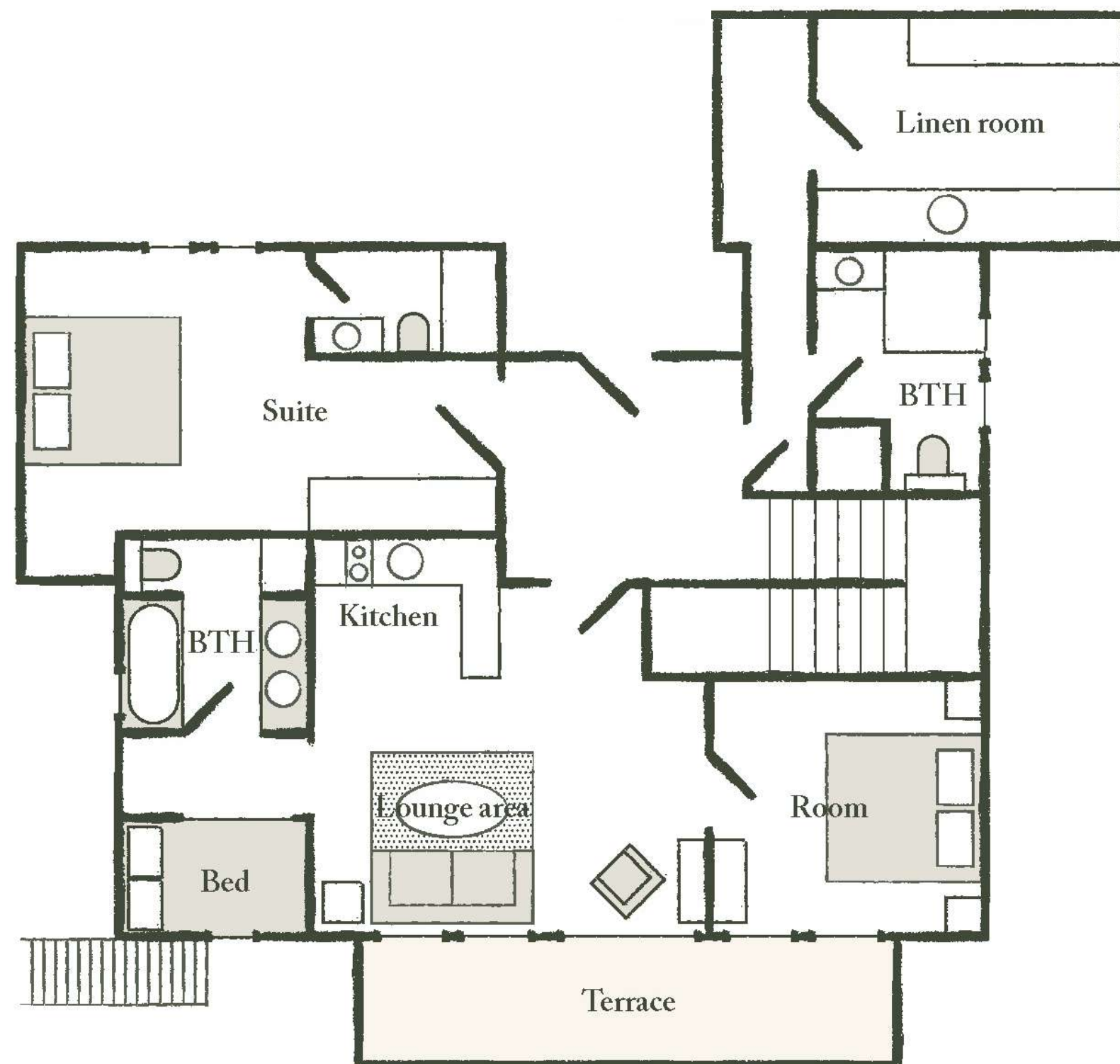
## THE GARDEN FLOOR

*Renovation work completed in 2023*

It comprises a private studio with 1 bedroom plus an enclosed Savoyard bed. A bathroom or shower and toilet, a kitchen with dining area and a cosy lounge opening onto the private terrace.

A large utility room and an adjoining shower room with toilet.

A recent magnificent suite, independent of the studio, with dressing room and a very beautiful shower room and toilet.





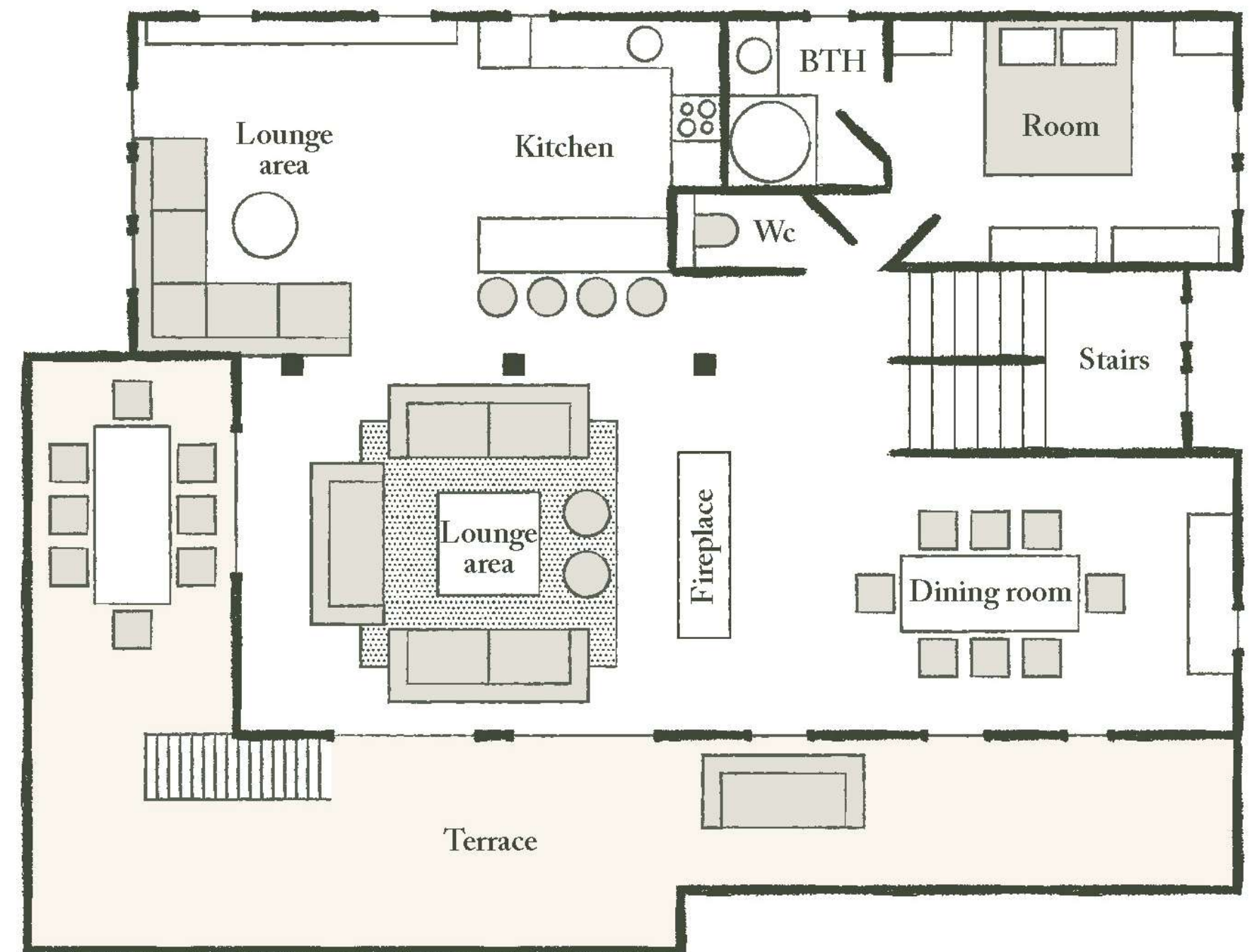
## THE MAIN FLOOR

*Totally renovated in 2023*

A large living room with a contemporary fireplace and large sofas.

Large picture windows open onto the balcony. Adjoining the large living room is the dining room, with its large oak table. A small TV lounge opens onto a beautiful contemporary open-plan kitchen with a bar, ideal for family get-togethers.

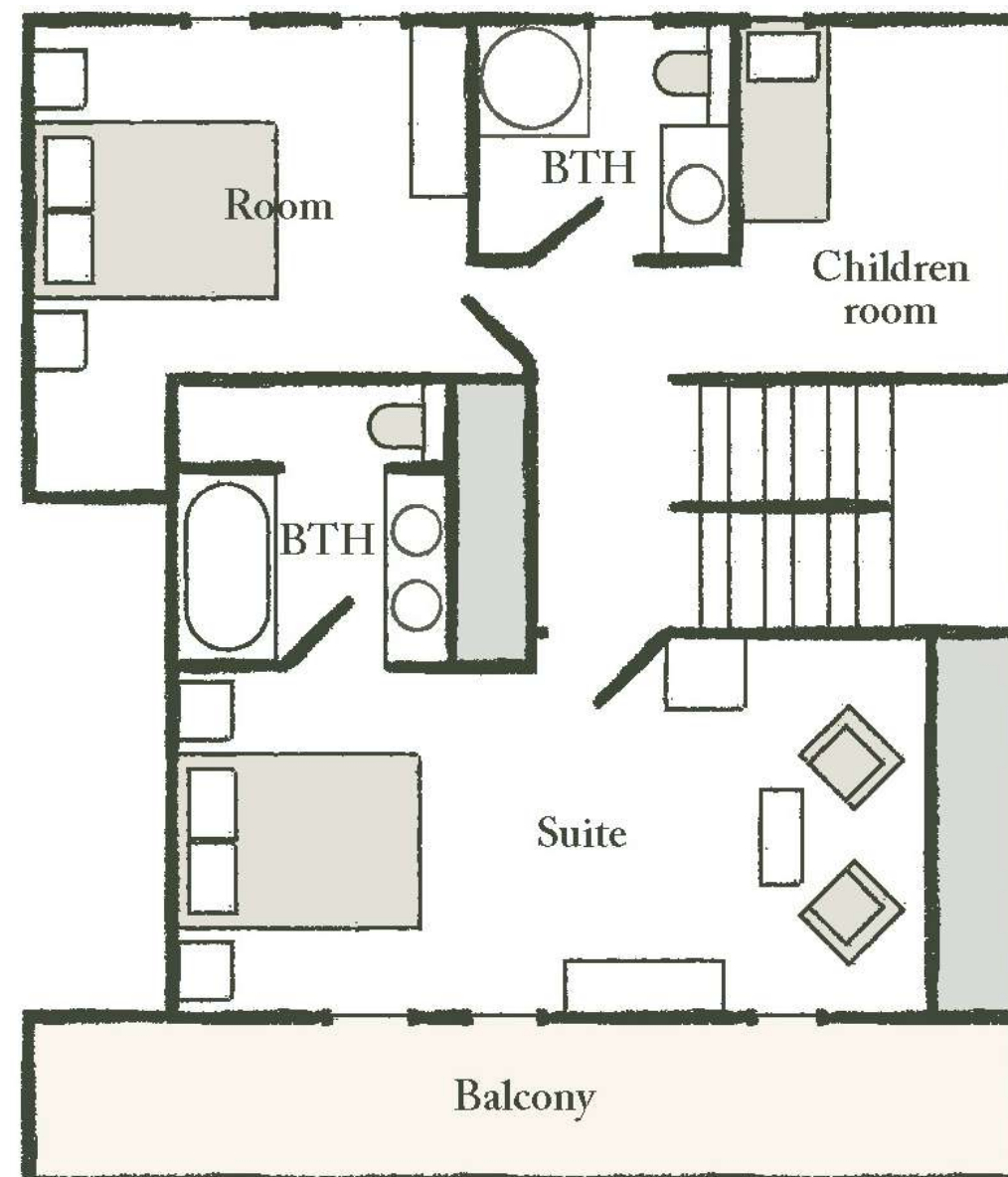
A separate toilet and a double bedroom with its own shower room.





## THE TOP FLOOR

2 bedrooms with character and 2 bathrooms occupy this charming floor under the wooden roof structure. The master bedroom, with its en suite bathroom and private balcony, is absolutely romantic. Lastly, there is a children's area under the roof structure with a single bed.





## THE HOTEL L'ALPAGA\*\*\*\*\*

Staying in Chalet Baltus also means having access to the areas and services of L'Alpaga:

### LA TABLE

*de l'Alpaga*

La Table de L'Alpaga, a Michelin-starred restaurant, offers gourmet Savoyard cuisine created by Alexandre Baule. Our Chef's creations celebrate the wealth of local produce with respect and ingenuity.

Only open in winter

### le bistrot

*de l'Alpaga*

Here, Chef Alexandre Baule offers a range of daily specials. A place to meet for lunch, dinner or a cocktail, indoors or on the terrace with its splendid mountain views.

### LE BAR

*de l'Alpaga*

A true celebration of the terroir, the Bar offers a unique sensory experience, with a breathtaking view of the mountains.

### LE SPA

*de l'Alpaga*

The *Spa de L'Alpaga* offers a fun indoor pool with bubbles and massage jets, a hammam and three treatment rooms. Outside and facing Mont Blanc, the Scandinavian bath, the sauna and the outdoor heated swimming pool will allow you to relax in an exceptional setting.









## CHALET BALTUS

### SERVICES INCLUDED

- Breakfast served in the restaurant
  - Internet access
- Access to the outdoor heated swimming pool
  - Access to the spa  
*(leisure pool, hammam, Scandinavian bath, sauna facing Mont-Blanc and fitness area)*
  - Free shuttle service  
8am to 10.30pm in winter,  
10am to 7.30pm in summer
  - Hotel taxes and services  
(excluding tourist tax)
  - Hotel concierge service
    - Room service

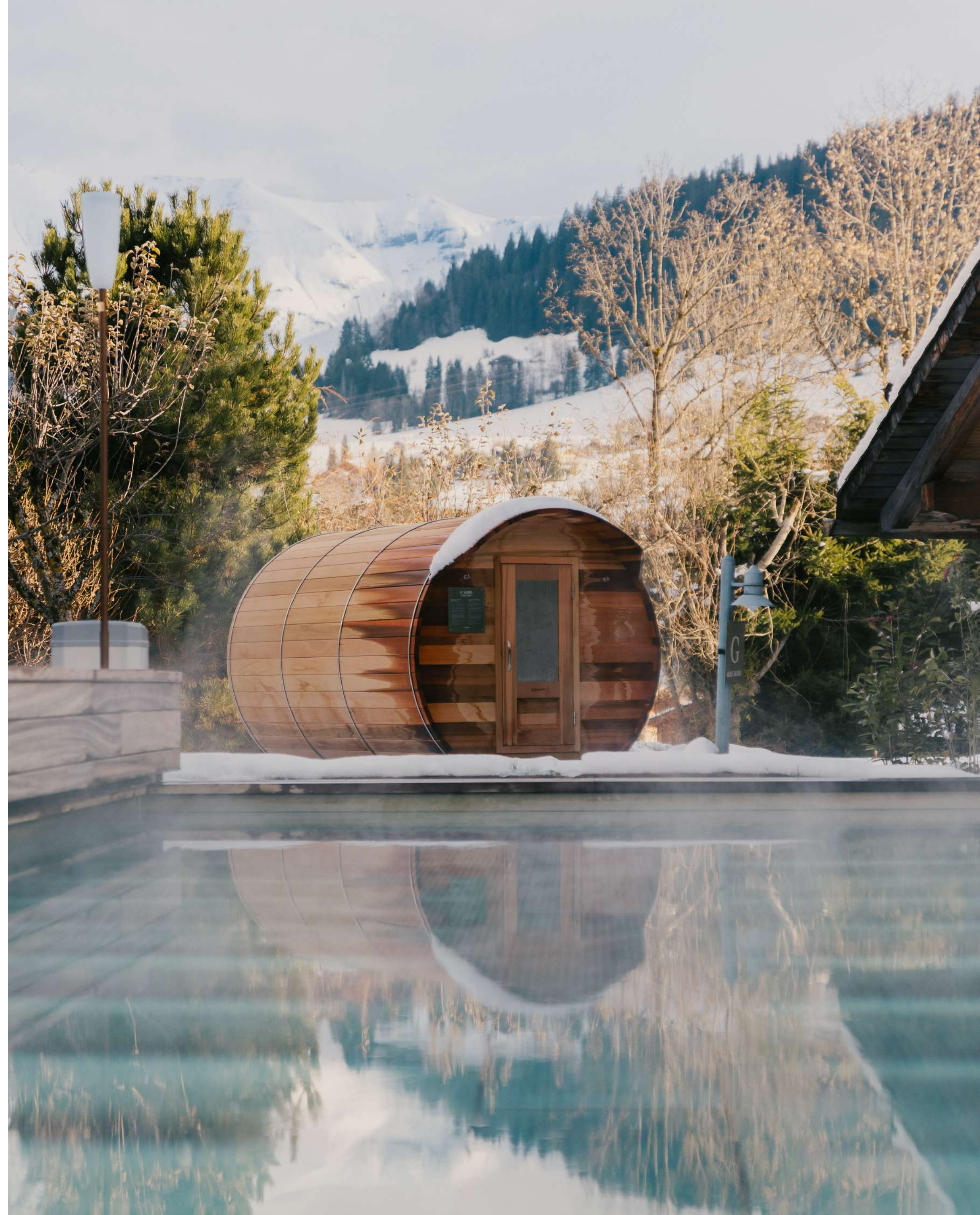
### OPTIONAL SERVICES

- Private car with driver
- Private chef in chalet  
(evening or weekly)
- Breakfast delivery to chalet
- Secure covered parking





CHALET AMBROISE











**CHALET AMBROISE**







## CHALET BALTUS

Because Megève is all about being outdoors and on the move, you can take advantage of a whole range of activities and experiences to get the most out of the area: in both summer and winter: cycling, fishing, white-water sports, paragliding, hot-air-ballooning, flying over the surrounding peaks in a plane or helicopter, sledging or dog-sledding. You'll be spoilt for choice.





## CONTACT

**Sales Manager**  
Camille Henri

*c.henri.alpaga@beaumier.com*

*events.alpaga@beaumier.com*

+33 (0)6 31 15 65 19

+33 (0)4 50 91 48 72



### GDS

AMADEUS (IA) = YX : MVVALP

SABRE (AA) = YX : 4800

GALILEO/APOLLO (UA) = YX : I6209

WORLDSPAN (IP) = YX : GVAAL

PEGASUS (WB) = YX : 71986